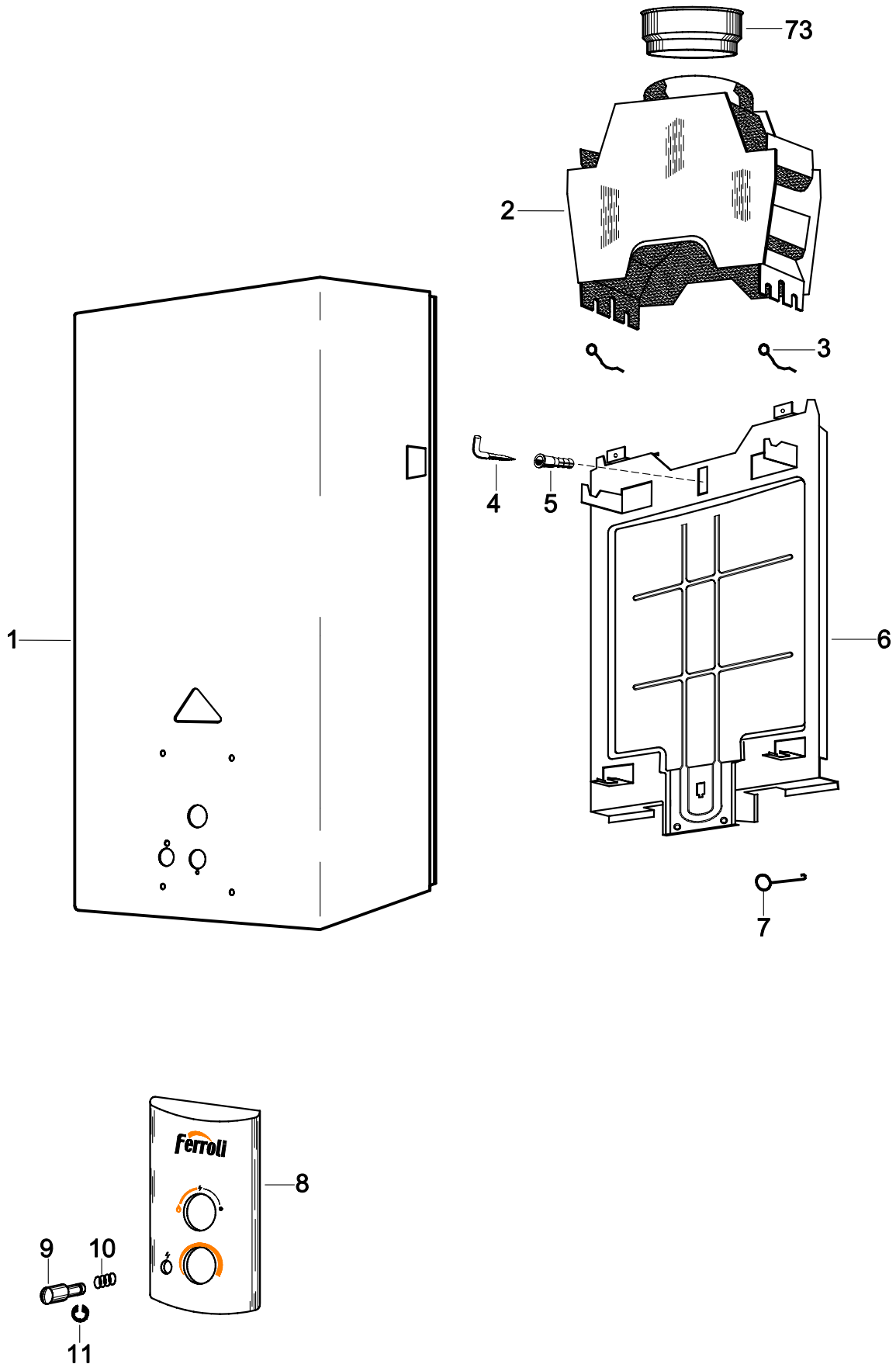




**SPARE PARTS FOR GAS WATER HEATERS  
CM-5 (RU) (UA)**

No.	DENOMINACION DESIGNATION - DENOMINATION	CODIGO CODE	No.	DENOMINACION DESIGNATION - DENOMINATION	CODIGO CODE
1	EXTERNAL COVER	6083	48	GAS PRESSURE TESTING SLEEVE	5489
2	DRAUGHT DIVERTER	6084	49	O-RING 17,5 X 1,5	8747
3	FIXING SPRING	6085	50	WASHER 9,63 X 3,63 X 2,62	5324
4	ANGLE SCREW	5372	51	ASSEMBLED GAS VALVE MECHANISM	10022
5	FISCHER PLUG	5373	52	GAS KNOB	10759
6	BACK SUPPORT	6086	53	TAPTITE SCREW M 3 X 6	8543
7	RADIATOR FIXATION SPRING	5819	54	DRAGGING PUSHER	8751
8	FRONT DECOR PLATE	10756	55	LEVER SPRING	8615
9	PIEZO BUTTON	10757	56	SUPPORT SLEEVE	8750
10	PUSHING SPRING	6089	57	POSITIONNING LEVER	8749
11	FIXING RING	5899	58	NATURAL GAS CONNECTION	8736
12	HEAT EXCHANGER	6091	59	FIBRE WASHER 18 X 13 X 2	5349
13	O-RING 1,8 X 1,5	5117	60	SCREW M 4 X 10	5285
14	SEPARATION SLEEVE	5242	61	THERMOELECTRIC VALVE BODY	5244
15	MEMBRANE ROD	5241	62	SCREW B 3,5 X 6,5	5370
16	RUBBER WASHER 14,5 X 10 X 3	5200	63	PIEZO SUPPORT	6092
17	CAP WATER BODY	5240	64	PIEZO LIGHTER	6505
18	MEMBRANE SUPPORT PLATE	5317	65	SCREW M 4 X 10	5398
19	RUBBER MEMBRANE	5239	66	MAGNETIC COIL GROUP	5267
20	MEMBRANE SLEEVE 11,8	5112	67	NUT M 24 X 1,5	5327
21	ASSEMBLED WATER BODY	5333	68	CENTERING O-RING	5820
22	SELECTOR KNOB	10758	69	SCREW AZ 4,8 X 13	5368
23	SCREW M 4 X 10	5285	70	COMPLETE THERMO-ELEMENT	8539
24	WATER FLOW TOP WASHER	5306	71	BURNER BODY	5698
25	WATER FLOW SELECTOR	5796	72	THERMOSTAT 110° C	8640
26	O-RING 7,6 X 1,8	5356	73	SMOKE EXIT CONNECTION	8722
27	SCREW M 5 X 12	5428		INSTRUCTIONS HANDBOOK	10761
28	WATER THROTTLE	5821		CARTON BOX	10762
29	RUBBER WASHER 18 X 12 X 1	5316		STYROPOR PROTECTOR	5321
30	COLD WATER STOPCOCK	5424		ACCESSORIES BAG	10292
31	WATER FILTER	6924		DATA LABEL N.G.	10763
32	FLEXIBLE CONNECTION HOSE	10676		IDENTIFICATION LABEL N.G.	10764
33	ASSEMBLED GAS MIXER 5 HEADS	5388		GAS TYPE LABEL N.G.	10765
34	ASSEMBLED GAS MIXER 4 HEADS	5132		AVERTISSEMENTS LABEL	10766
35	SCREW M 4 X 6	6125		DATA LABEL GOST	10165
36	MIXER SUPPORT	6124			
37	BURNER NOZZLE, NATURAL GAS 0,95	10760			
38	PILOT TUBE	5320			
39	PILOT PIPE SUPPORT	5258			
40	PILOT NOZZLE, NATURAL GAS 0,36	8978			
41	GAS PRESSURE TEST SCREW	5003			
42	NUT M 36 X 1,5	5319			
43	RETAINING RING	5064			
44	GAS VALVE SPRING	5017			
45	VALVE PLATE	5318			
46	WASHER 19 X 13 X 1,5	5087			
47	CORK WASHER	5264			

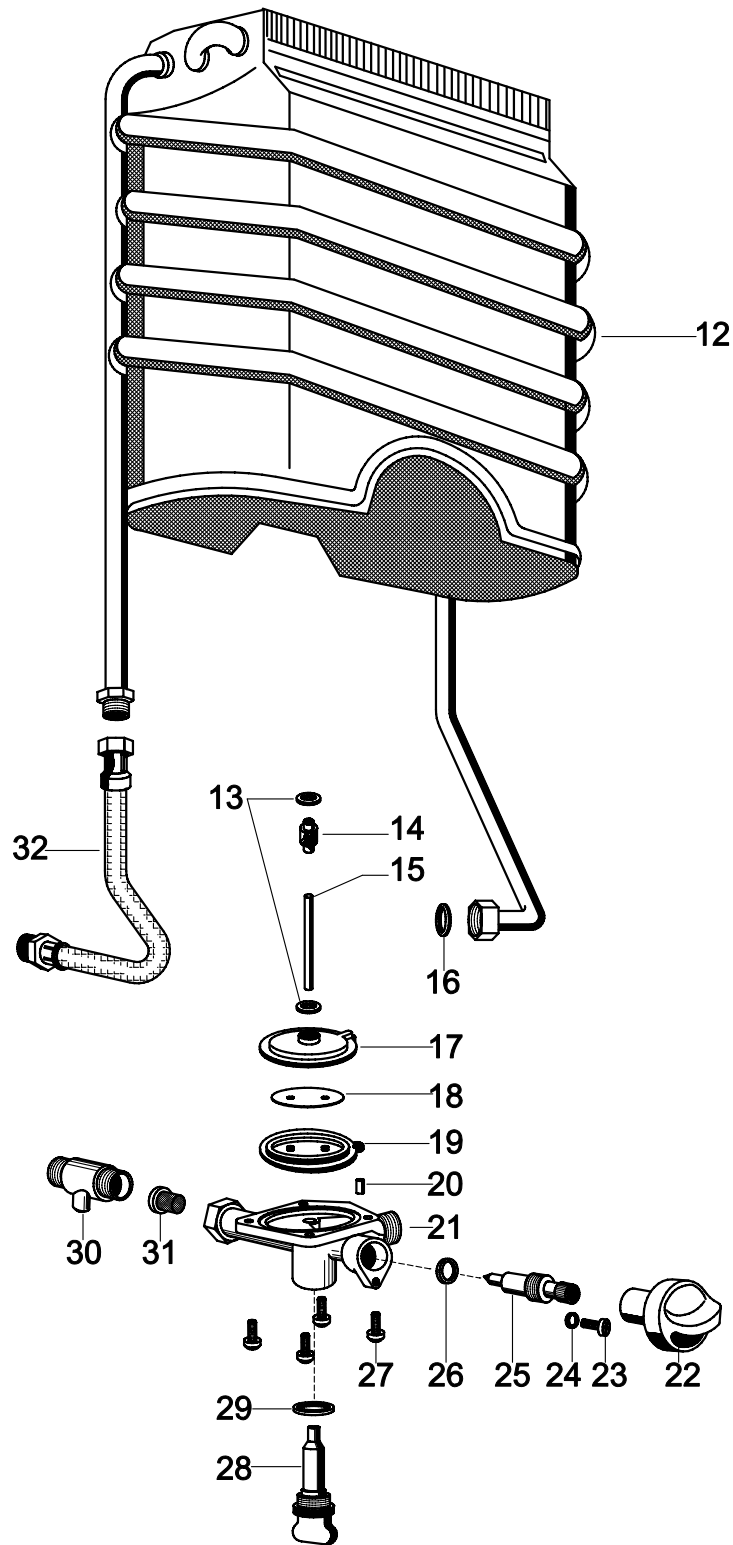
	Modific.	Modific.	Modific.	Modific.	Modific.	Modific.	Modific.	<b>Modelo:</b>	<b>CM-5 (RU) (UA)</b>
Fecha	05/10/06							<b>Model:</b>	
V°.B°.	<i>Aut.</i>							<b>Modele:</b>	



GAS WATER HEATER

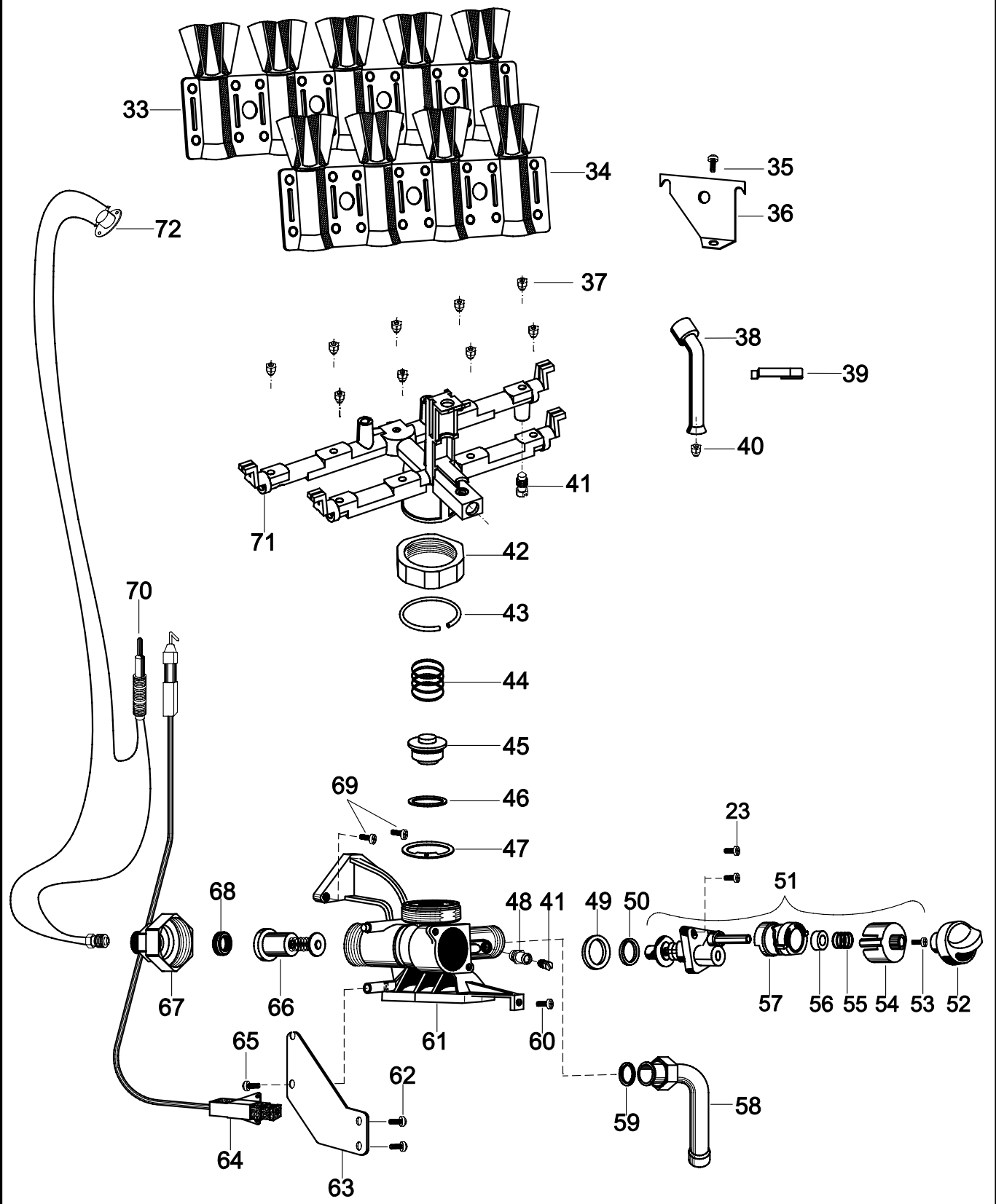
	Modific.	Modific.	Modific.	Modific.	Modific.	Modific.	Modific.
Fecha	06/10/06						
V°.B°.	<i>Cast.</i>						

**Modelo:**  
**Model:** CM-5 (RU) (UA)  
**Modele:**



WATER SYSTEM

	Modific.	Modific.	Modific.	Modific.	Modific.	Modific.	Modific.	Modelo:
Fecha	05/10/06							Model:
V°.B°:	<i>Aut.</i>							Modelo: <b>CM-5 (RU) (UA)</b>



GAS SYSTEM